



BHOOMIⁱ
BUILDING FOR A BETTER TOMORROW

AN ARCHITECTURAL MASTERPIECE IN THE HEART OF NATURE

Bhoomi Developers is a real estate developer in Nepal devoted towards providing luxurious and functional living spaces with high-class facilities. At Bhoomi Developers, we offer properties with numerous facilities needed for a modern and best-in-class lifestyle. Bhoomi Developers comprises three board groups: Vishal Group, Debenara Group, and Baba Group. To be precise, Bhoomi Developers is more than just a company, but a merger of expertise, reputation, and experience. Bhoomi Developers work with the motto of “incorporating luxury with comfort”.

Residing in the pristine yet elegant area with the lush greenery of Godawari, will allow you to relax and unwind.

BHOOMIⁱ
BUILDING FOR A BETTER TOMORROW

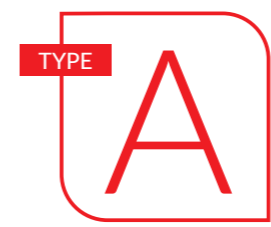
GODAWARI VALLEY



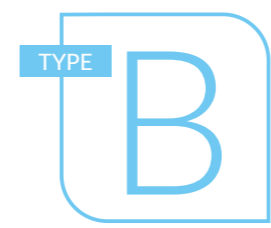
Bhoomi's latest product- "Godawari Valley", just 20 minutes from Satdobato, is connected to the 4 lane Godavari main road, and comprises of 71 earthquake-resistant houses with a total area of 40 ropani. Godawari valley has several amenities which include top-grade security and CCTV surveillance, spacious parking area with individual EV charging ports, an amphitheater, and underground cabling. In addition, all houses in Godawari valley are Vastu-approved, bringing prosperity and happiness to your life. Our Residential Club has an infinity heated pool, fully equipped gymnasium hall, steam and sauna room.



**MASTER PLAN
GODAWARI**



2635.71 Sq.Ft



3360 Sq.Ft



2635.71 Sq.Ft

Designed graciously with modern touches, houses at Godawari valley are strikingly beautiful. Stepping in Godawari valley means witnessing a world that reiterates a premium way of living.

Land Area: 40 Ropanis

No. of Plots – 71 ultra-modern house

Plot area: Ranging from 4.5 anna – 12 anna





TYPE
A

2635.71 Sq.Ft.

- Living room 1 • Dining 1
- Kitchen 1 • Family room 1
- Bedrooms 5 • Pooja room 1

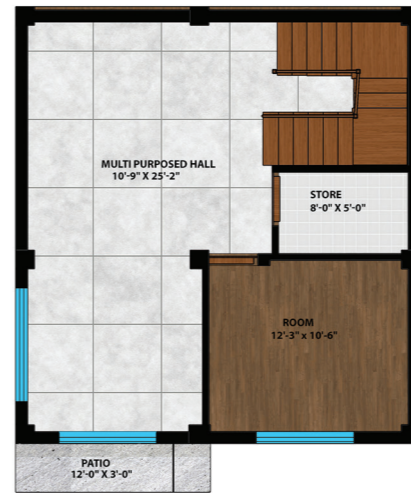




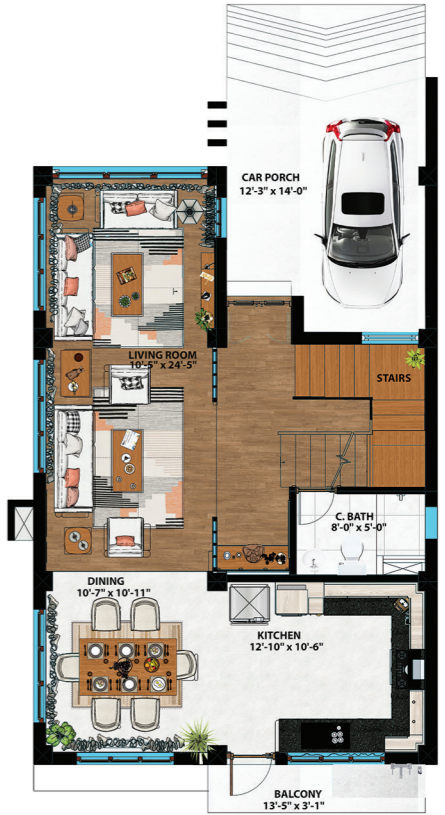
TYPE **B**

3360.00 Sq.Ft.

- Living room 1 • Dining 1
- Kitchen 1 • Family room 1
- Bedrooms 6 • Pooja room 1
- Multi Purposed Hall 1



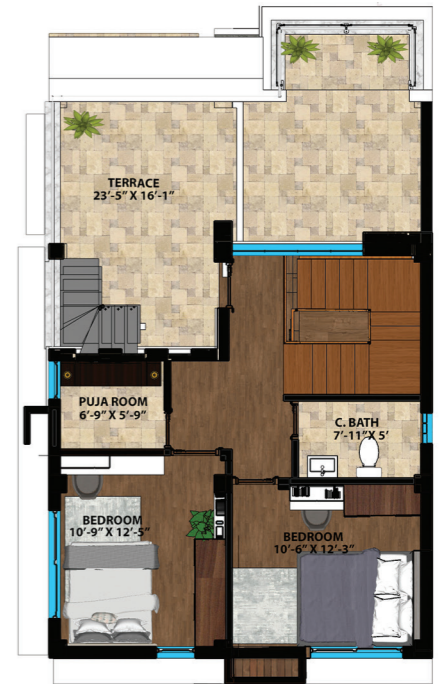
Semi-Basement Plan
674.42 Sq. ft.



Ground Floor Plan
982.47 Sq. ft.



First Floor Plan
1019.12 Sq. ft.



Second Floor Plan
683.99 Sq. ft.



LIVING ROOM



DINNING



KITCHEN

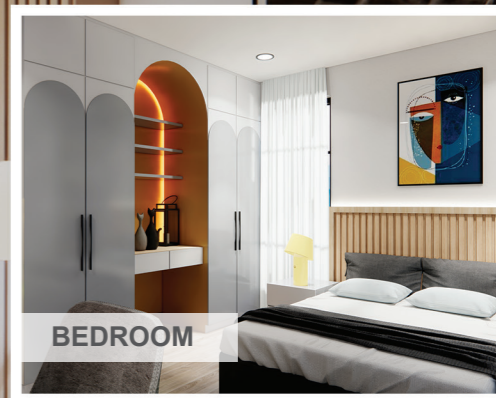
We believe that interior design is more than great functionality and beautiful aesthetics. We aim to make your home interior a reflection of your personality. Our efficient, customized home interior designs incorporate your needs in every nook of your home, so your space meets your every requirement. Our dedicated home interior designers work with you tirelessly to tie your style with their design expertise, creating the perfect interior design plan.



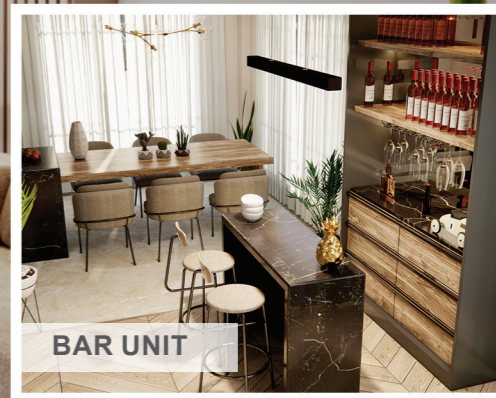
FAMILY ROOM



MASTER BEDROOM



BEDROOM



BAR UNIT

Residential Club

Our multipurpose community building caters to official programs like seminars inside the community as well as other recreational purposes and also has a city view roof top cafe



Amphitheater with a view

Our amphitheater is perfect for celebrations or parties in the community. You can also utilize this area for your morning or evening walks.



Fully Equipped Gymnasium Hall

Our well-equipped gym is here to help you stay on track with your fitness goals.

OPEN SPACE



Earthquake Resistant

For the safety against earthquakes, our houses are built under Nepal government's standard on construction projects, ensuring high earthquake resistance.



vastu
Approved Setting

Our houses are free from Vastu complications hence making your ambience - auspicious.



Children Play Ground

We have open and green space with outdoor games meant for you and your children to have good outdoor playtime with family and friends.



**Individual EV
Charging port
at parking**

Individual EV charging ports are available at parking stations for all EV car owners to make charging simple, hassle-free, and safe.



**24 hours security and
CCTV surveillance**

We offer top-notch security with our surveillance system, constantly monitoring and maintaining your safety.



**24 hours
water supply**

We offer 24 hours water supply to ease out on all of your domestic purpose. Furthermore, all taps and appliances are fed directly from individual water tanks.



Corporate Office

Bhagwati Bahal, Naxal -1, Kathmandu, Nepal

For Inquiry. :+977- 9802318676, 9802318677, 01-5910294, 01-4502050

Email: info@bhoomi.com.np | Website: www.bhoomi.com.np

Site Office: Taukhel -3 Godawari | +977- 9802318678